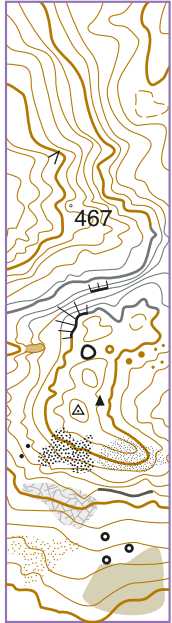




NATIONAL TRAILS Key to map symbols



- Contour (15m interval)
- Index contour (75m interval)
- Auxiliary contour
- Cave or mine
- Spot height (metres, from air survey)
- Predominantly rocky ground
- Major crag
- Gully, tor, shaft, sink holes: large, small
- O.S. trig pillar, large cairn
- Large boulder, boulder field, scree
- Limestone: pavement, outcrop
- Area of sink holes, pot hole (some dangerous shafts), workings

Contours change from brown to grey where the ground is predominantly rocky outcrops, small crags and other bare rock.

- Long Distance Path .. on track
- .. on path
- .. on indistinct path
- .. on road, take care
- .. no visible path

- Loch or lake, dam,
- Lochan or small lake, pond
- Beach, coastal rock, dunes
- Island, mud
- Lighthouse, beacon, pier or jetty
- River, footbridge
- Wide stream
- Narrow stream
- Peat hags, marshy ground

- Dual carriageway
- Main road
- Wide minor road
- Minor road
- Residential road
- Tarmac track
- Railway, station, tunnel
- Dismantled railway
- Track or forest road
- Path or old track
- Intermittent path
- Powerline, pipeline
- Ruin, sheepfold
- Building, settlement, church

The representation of a road, track or footpath is no evidence of the existence of a right of way.

- Farmland
- Rough pasture
- Open hill or moorland
- Predominantly natural forest/woodland
- Plantation
- Ride
- Boundary maintained
- Boundary remains

Walls, ruined walls and fences are shown on moorland. With farmland, only the outer boundary wall or fence is shown. Plantation includes newly planted trees, dense forestry and felled areas.

RIGHTS OF WAY Right of Way information is taken from the Definitive Map. It is intended as a guide for walkers and cyclists to the legal accessibility of routes. For further detailed information on the status of any route (including BOATs, RUPPs and Restricted Byways, all shown as Bridleways on this map) refer to the Definitive Map held by the Local Authority.

- Public footpath: with path on the ground
- without path on the ground
- Public bridleway: with path on the ground
- without path on the ground
- Permissive path (permission may be withdrawn)
- Long distance path

- Toilets
- Car park
- Information point
- Public telephone
- Food shop
- Accommodation
- Public house
- Refreshments
- Tourist attraction
- Youth hostel
- Golf course
- Caravan site
- Campsite
- Post office
- Bank
- Chemist
- Garage